

  
BAGLIETTO



M.Y. MERIDIANA









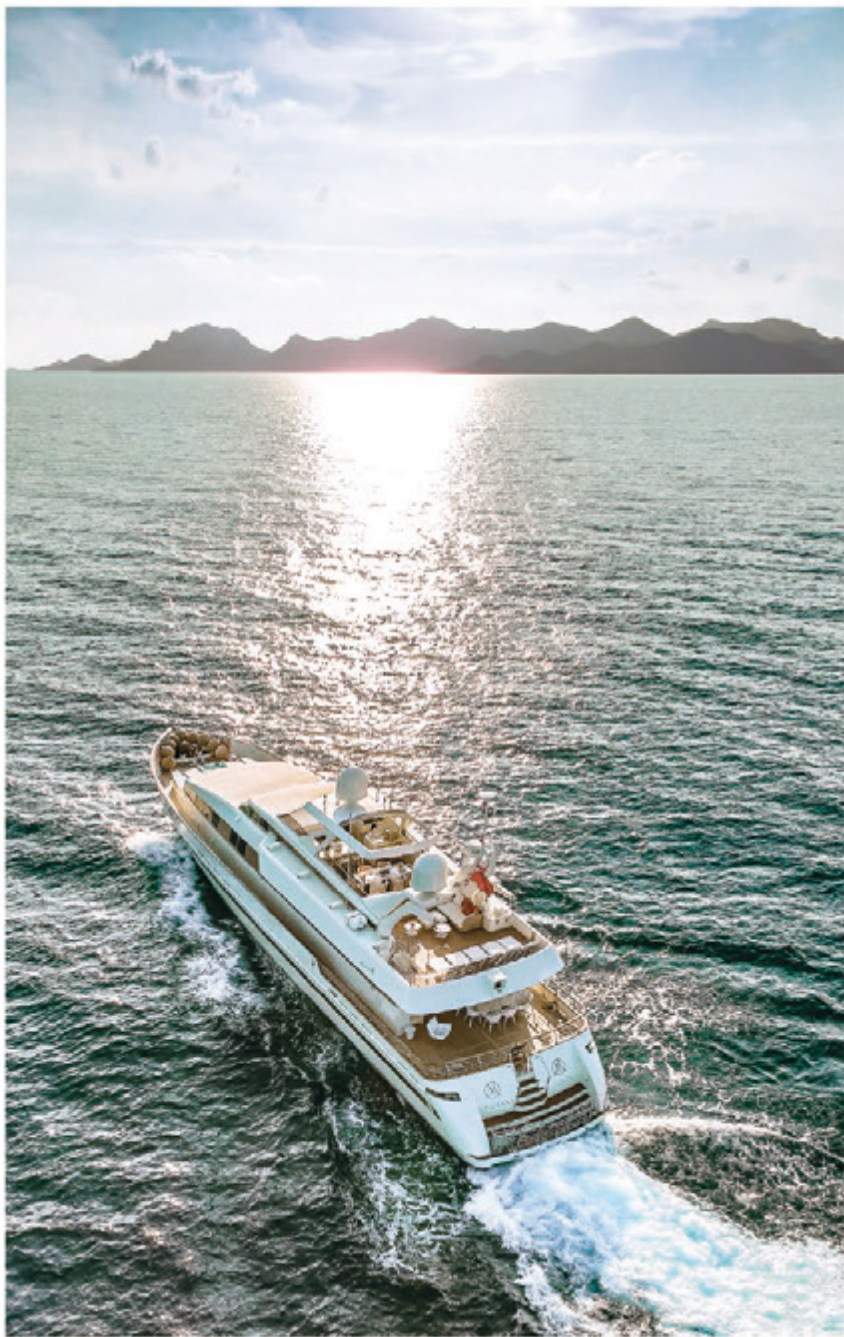


























































































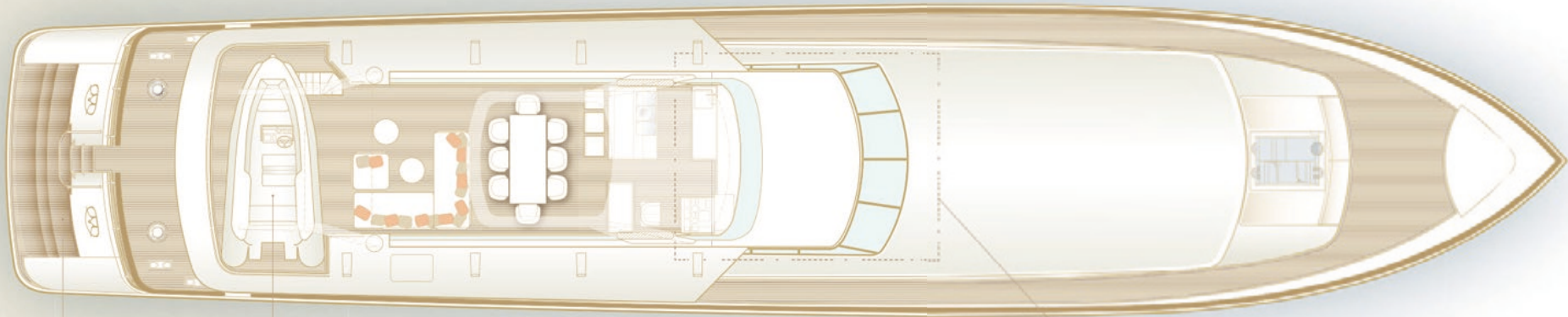








SUNDECK



SWIM PLATFORM

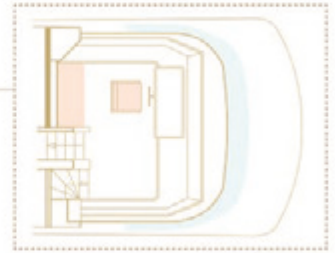
TENDER

LIVING

MAIN KITCHEN

MASTER CABIN

JACUZZI TUB



WHEEL HOUSE

MAIN DECK



SWIM PLATFORM

TENDER

LIVING

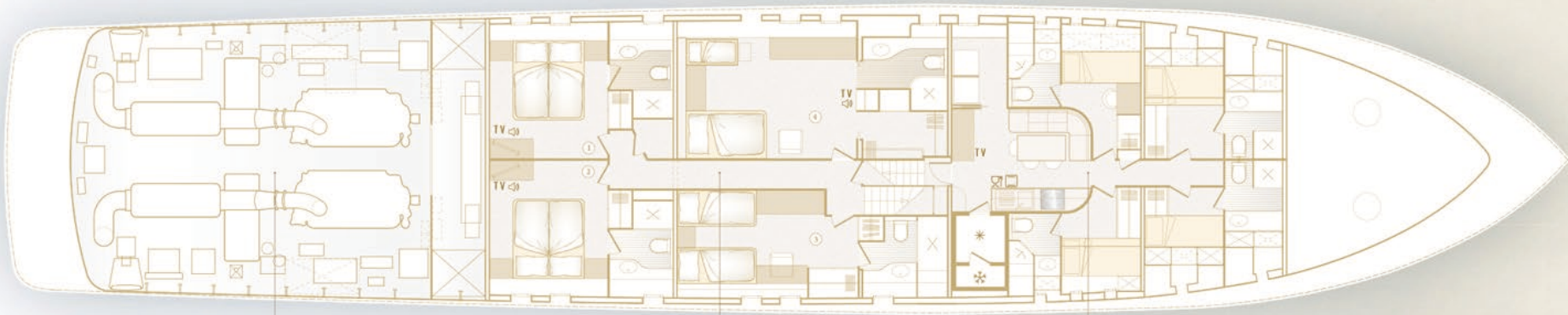
MAIN KITCHEN

MASTER CABIN

JACUZZI TUB

WHEEL HOUSE





LOWER DECK

AFT DECK

ENGINE ROOM

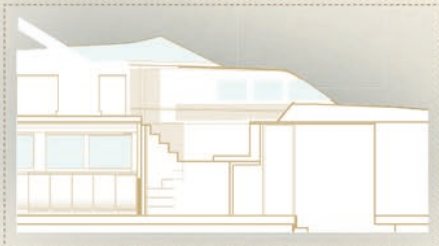
SUNDECK

GUEST CABINS

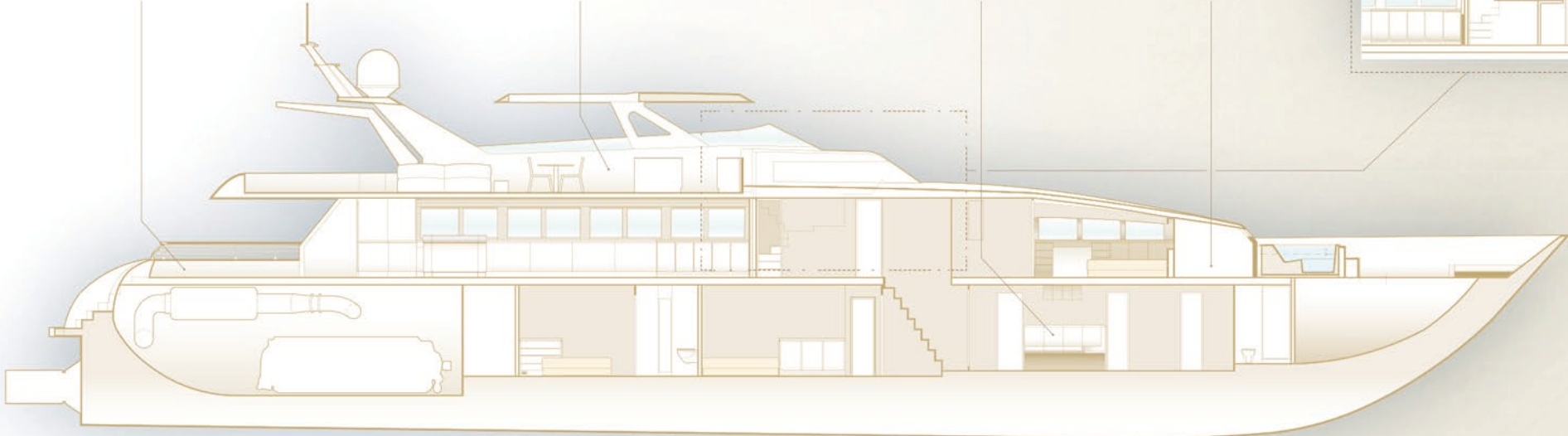
CREW MESS

CREW

STOWING

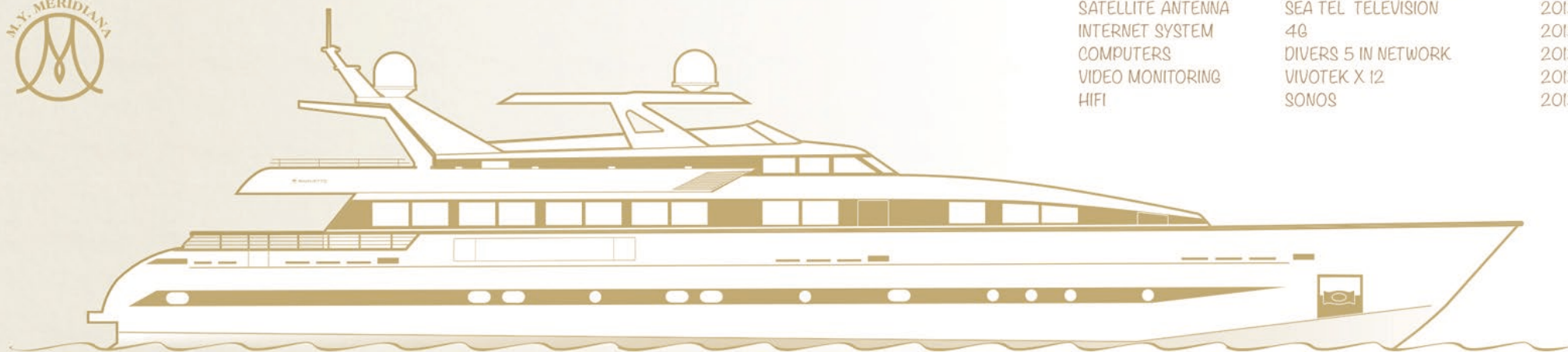


WHEEL HOUSE



SECTION





#### INTERNAL MEDIA & NETWORK

SATELLITE ANTENNA	SEA TEL INTERNET-VSAT	2013
SATELLITE ANTENNA	SEA TEL TELEVISION	2013
INTERNET SYSTEM	4G	2013
COMPUTERS	DIVERS 5 IN NETWORK	2013
VIDEO MONITORING	VIVOTEK X 12	2013
HIFI	SONOS	2013

#### MAIN CHARACTERISTICS

CONSTRUCTION YEAR	1990
COMPLETE REFIT	1997/1998
GRAND REFIT	2013/2014
LENGTH	39.5 M
WIDTH	125" - 7.40 M
DRAFT	5.2" - 1.60 M
DRAFT/DRAUGHT	2.2
WEIGHT	145 TONNES
GROSS TONNAGE	255
NET TONNAGE	76
CLASSIFICATION	LLOYD'S +AI
MASTER CABINE	1 2 PERS - MAIN BRIDGE
GUEST CABINES	4 8 PERS
CREW CABINES	4 6 PERS

#### SPEED, RANGE AND MACHINERY

CRUISING SPEED	22 KNOTS
MAXIMUM SPEED	24 KNOTS
MAIN ENGINES	MTU 2 X 2500 CV / 1800 H 1998
GENERATORS	ONAN 2 X 45 KW / 3800 H 1998
PROPULSION	KAMEWA X 2
STABILIZERS	CMC ZERO SPEED 2013
BOWTHRUSTER	X 1
FLAPS	X 4
AIRCONDITIONING	3 COMPRESSORS 1998-2014
WATERMAKER	5'000 L/DAY 1998
SWEETWATER TANKS	5'000 L
FUEL TANKS	38'000 L
GREY- & BLACKWATER TREATMENT	2013

#### NAVIGATION

RADAR	FURUNO X 2	2013
MECHANICAL GYROSCOPE	SIMRAD X 1	2014
SATELLITE GYROSCOPE	1	2013
PLOTTER SYSTEM	MAXSEA X 3	2013
AUTOMATIC PILOT	PLATH X 1	2013
VHF FIX	SAILOR X 1	2013
VHF MOBILE	ICOM X 2	2013
SSB	SKANTI	2013
AIS	FURUNO	2013
GPS	FURUNO X 3	2013
PABX	PANASONIC	2013
GSM	SUR PABX	2013





ENJOY LIFE ONBOARD THE M/Y MERIDIANA, A SHIP SUITABLE FOR THOSE WITH VERY HIGH STANDARDS.

THE MOTOR YACHT MERIDIANA WAS BUILT IN 1990 AT THE BAGLIETTO PIER IN ITALY. IN 1998, IT WAS PROVIDED WITH NEW ENGINES AND GENERATORS AND FULLY RE-EQUIPPED. AFTER IT CHANGED OWNERS IN 2012, IN 2013/2014 IT WAS SUPPLIED WITH COMPLETELY NEW COMPUTER EQUIPMENT, WAS RENOVATED AND REPAINTED, A COMPLETE REFITTING... ALL TECHNICAL SYSTEMS SUCH AS NAVIGATION AND COMMUNICATION WERE REPLACED AS WELL AS THE SYSTEM FOR GREY- & BLACKWATER TREATMENT. ALL ENGINES, JETS AND OTHER INSTALLATIONS IN THE EQUIPMENT ROOM WERE COMPLETELY UPGRADED AND REVISED. THE SHIP IS ALSO EQUIPPED WITH A FRESH WATER EXTRACTION PLANT.

THE BAGLIETTO ARCHITECTURE REMAINED. AN ELEGANT COLOUR SCHEME UNDERSCORES THE SLEEK AND MODERN LINE OF THE SHIP. THE SUNDECK HAS BEEN SUPPLIED WITH A ROOF WITH AUTOMATIC SUN AWNING, A KITCHEN WITH AN ICE MACHINE, REFRIGERATORS, STOVE, WOK AND GRILL. YOU CAN ENJOY THE SUNSET, YOUR DINNER AT A TABLE WITH A PANORAMIC VIEW, YOUR DAY IN THE SUN WHILE COMFORTABLY LYING OUT AND RELAXING... YOU CAN INSTALL FISHING RODS OF DIFFERENT SIZES SO THAT YOU CAN BRING YOUR FISH OUT OF THE WATER AND LAY IT DIRECTLY ON THE GRILL.

THE MERIDIANA MOTOR YACHT IS AN EXTREMELY LUXURIOUS, COMFORTABLE AND FAST SHIP. EQUIPPED WITH ELECTRICALLY CONTROLLED, ENGINE-OPERATED STABILIZERS, THE YACHT IS SAFE AND QUIET, BOTH WHEN SAILING AND DOCKED. THE INFORMATION TECHNOLOGY AND ENTERTAINMENT INSTALLATIONS WERE COMPLETELY UPDATED, EQUIPPED WITH TOP-OF-THE-LINE PRODUCTS AND HAVE SOMETHING FOR EVERYONE:

ALL INTERNAL AND EXTERNAL AREAS ARE COVERED BY A HIFI SOUND SYSTEM BY SONOS AND CAN BE INDIVIDUALLY CONTROLLED IN ALL SECTIONS. NEW TVS BY SAMSUNG HAVE BEEN INSTALLED IN THE CABINS. IN THE LIVING AREA, THERE IS A FOLDAWAY LARGE SCREEN SAMSUNG TELEVISION, ONLY VISIBLE WHEN DESIRED. INTERNET TV, SATELLITE TV AND CONNECTIONS FOR A FILM LIBRARY ARE PROVIDED. A NEW PHONE SYSTEM WAS INSTALLED THROUGHOUT THE SHIP AND ALSO IN ALL CABINS. WIFI AND ALL SATELLITE CONNECTIONS ARE AVAILABLE ON BOARD.

THE PRIORITY WAS ON TOP-BRAND QUALITY FOR THE INSTALLATION. THE FURNITURE IS PRIMARILY FROM FENDI, KENZO, B&B ITALIA AND PAOLA LENTI; KITCHEN FURNITURE ON THE MAIN DECK AND ON THE SUN DECK IS FROM SCHIFFINI, ELECTRICAL EQUIPMENT BY MIELE. THERE ARE TWO WASHING MACHINES AND TWO DRYERS BY MIELE MARINE. THE CREW KITCHEN IS EQUIPPED WITH NEW ELECTRICAL DEVICES.

THE SALON LEVEL ON THE MAIN DECK INCLUDES THE MASTER CABIN. ON THE LOWER FLOOR, THERE ARE FOUR GUEST CABINS, ALL CABINS WITH PRIVATE BATH AND WC; THEY CAN ACCOMMODATE UP TO 10 GUESTS. A JACUZZI IS LOCATED AT THE SHIP'S BOW WITH A WONDERFUL VIEW AND RELAXATION ZONE. THERE ARE ALSO FOUR CREW CABINS ON BOARD, EACH WITH A SHOWER AND WC FOR A MAXIMUM OF SIX CREW MEMBERS, SO THAT THE CREW ALSO FEELS GREAT. THE CAPTAIN HAS BEEN ON THE SHIP FOR 16 YEARS AS WELL AS THE SAILOR, THE ENGINEER HAS BEEN ONBOARD FOR 6 YEARS.





M.Y. MERIDIANA